

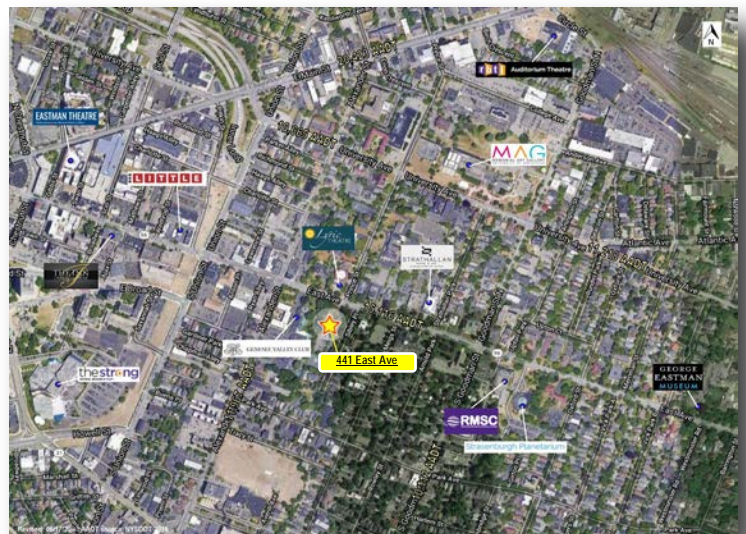
**For LEASE**

# 441 East Avenue

Rochester, NY 14607



- **For Lease** - 5,800 +/-SF in newly renovated Office Building on 1.7 Acres.
- The building is located at the corner of East Avenue and Sibley Place, one of the premier locations in the City of Rochester. A prominent corner location on one of Rochester's most desirable avenues. Lawley Insurance is the Co-Tenant in the building.
- Located in the vibrant East End District of Rochester, in close proximity to the Central Business District/Downtown Rochester. Building is in the East Avenue Preservation District.
- Nearby amenities include: The Little Theatre, Genesee Valley Club, Strathallan Hotel, Lyric Theatre, RMSC, The Inn on Broadway, Eastman Theatre, Memorial Art Gallery, Strasenburgh Planetarium, and George Eastman Museum.
- Current build-out includes: multiple private offices, a large open area, new restrooms and new mechanicals.
- Can be built out to suit and offers a private entrance. See renderings on the next page which depict a floor plan and a conceptual design.



Michael A. Smith - Michael@LLDEnterprises.com  
Director of Leasing / Licensed Real Estate Salesperson  
585-244-3575 ext. 310

David M. Dworkin - David@LLDEnterprises.com  
Licensed Real Estate Broker  
585-244-3575 ext. 301

[WWW.LLDENTERPRISES.COM](http://WWW.LLDENTERPRISES.COM)

10/06/22